



At-A-Glance 2009-2010

Improving Health and Well-Being of Communities





Morehouse School of Medicine is dedicated to improving the health and well-being of individuals and communities; increasing the diversity of the health professional and scientific workforce; and addressing primary health care needs through programs in education, research, and service, with emphasis on people of color and the underserved urban and rural populations in Georgia and the nation.



CORE VALUES

- Knowledge: continuously creating, acquiring and communicating science-based information to better understand and enhance the human condition.
- Wisdom: encouraging, promoting and supporting the exchange of knowledge and experiences to cultivate insight, discernment, and good judgment in our scholarly, service, and administrative endeavors.
- Excellence: consistently achieving the highest level of performance and upholding the highest standards of ethical behavior while taking individual and collective responsibility for our actions and outcomes.
- Service: maintaining an environment that exceeds expectations, holds every individual in high regard and esteem, and treats all patients and clients with compassion and empathy.

VISION

Morehouse School of Medicine will be known as the nation's leading community-focused, research-driven, student-centered medical school, recognized for its:

- Pre-eminence in the conduct of research and translation of discovery into community solutions and improved patient care that contributes to the elimination of health disparities;
- Model educational environment that nurtures and supports the achievement of academic excellence;
- Leadership in creating models and best practices of integrative, culturally competent and community empowered health and health care; and
- Significant contributions to the diversity of the health care and scientific workforce and the development of leadership committed to improving the health of vulnerable populations and the nation's health care system.



HISTORICAL HIGHLIGHTS



1969

- > Georgia Health Manpower Task Force releases study recommending the establishment of a medical school at the Atlanta University Center (AUC) — the largest consortium of historically black institutions of higher learning in the nation — to address the shortage of underrepresented physicians serving urban and rural communities.
- > Louis C. Brown, M.D., a member of the task force, approaches Hugh M. Gloster, Ph.D. — then president of Morehouse College — with the idea of starting a medical school.

1970

- > Dr. Gloster receives approval from Morehouse College's board of trustees and endorsement from the AUC Council of Presidents to investigate the possibility of establishing a medical school.

1973

- > Morehouse College receives funding from the Bureau of Health Manpower of the U.S. Department of Health, Education, and Welfare to conduct a feasibility study to determine if establishing a medical school is achievable.

1974

- > Morehouse College releases study concluding that it is feasible to plan a two-year medical school of basic medical sciences, where third-year students transfer to contractually affiliated medical schools to complete their clinical training.
- > Morehouse College receives funding from the U.S. Department of Health, Education and Welfare to plan a two-year basic medical sciences curriculum.

1975

- > Morehouse College begins the establishment of its medical sciences program with the appointment of Louis W. Sullivan, M.D., as dean and director of the School of Medicine at Morehouse College.

1978

- > Charter class of 24 students enroll in two-year medical education program with student transfer affiliation agreements with Emory University, the Medical College of Georgia, Howard University, and the University of Alabama at Birmingham.
- > Clinton E. Warner, M.D., named first chairman of the board of trustees.

1980

- > The Higher Education Act of 1965 is reauthorized to provide financial assistance and other resources for students pursuing postsecondary and higher education.
- > The Title III Institutional Aid Program is established to equalize educational opportunity for disadvantaged students by assisting eligible colleges and universities (i.e., Historically Black Colleges and Universities and Historically Black Graduate Institutions.)



1981

- > The Liaison Committee on Medical Education (LCME) authorizes the school to expand to four years and offer the M.D. degree.
- > A qualifying clause in the federal Higher Education Act (HEA) amendment regarding educational institutions making a substantial contribution to increase the number of minority health professionals allowed Morehouse medical school to apply under the Title III Challenge Grant, with matching funds from the state of Georgia, to develop a four-year, medical education program.
- > State of Georgia commits to matching the annual Title III award at \$2 million per year.
- > The school separates from Morehouse College and becomes Morehouse School of Medicine (MSM), an independently chartered, four-year M.D. degree granting institution.
- > Dr. Sullivan named the first president and dean of Morehouse School of Medicine.
- > First undergraduate class of 32 students enroll under four-year M.D. curriculum.
- > Graduate medical education program initiated with the accreditation of the Family Medicine residency program, at Southwest Community Hospital, by the Accreditation Council for Graduate Medical Education.

1982

- > MSM becomes a member of the AUC.
- > Title III funding initiated.
- > MSM moves from Morehouse College's campus to the Basic Medical Sciences building (now known as the Hugh M. Gloster Basic Medical Sciences building).

1983

- > Charter class of third-year medical students begins clinical rotations at Grady Memorial Hospital in cooperation with Emory University School of Medicine.
- > Five-year contract executed with Emory University School of Medicine to teach all third-year clerkships.

1985

- > LCME grants full accreditation to award the M.D. degree.
- > First students awarded the M.D. degree under the four-year curriculum.
- > CORK Institute established to study substance abuse and addiction.
- > Stanley Olsen, M.D., named dean.

1986

- > Southern Association of Colleges and Schools (SACS) grants full accreditation.
- > Public Health and Preventive Medicine residency program initiated.
- > Morehouse Medical Associates (MMA) incorporated.
- > Research Centers in Minority Institutions Program established.

1987

- > Stanford Roman, M.D., named dean.
- > The Medical Education building opens to house the library, classrooms, laboratories, and faculty offices.

1988

- > The Harris Building is renovated to house administrative offices.



Hugh M. Gloster Building

1989

- > Dr. Sullivan resigns as president to become Secretary of the U.S. Department of Health and Human Services.
- > James A. Goodman, Ph.D., named president.

1990

- > Dewitt Alfred, Sr., M.D., named dean.
- > MSM assumes full responsibility for teaching third-year clerkship in Family Medicine, Surgery, and Psychiatry.

1991

- > LCME and SACS reaffirm accreditation.
- > Graduate Education in Biomedical Sciences Ph.D. program initiated.
- > Affiliation agreement signed with Grady Memorial Hospital.
- > Psychiatry residency program begun.

1992

- > James A. Goodman, M.D., resigns as president.
- > Nelson McGhee, M.D., named interim president.
- > Internal Medicine residency program begun.

1993

- > Louis W. Sullivan, M.D., appointed as president.
- > MSM assumes full responsibility for third-year clerkship in Obstetrics and Gynecology.
- > Surgery residency program begun.

1995

- > Master of Public Health (M.P.H.) program initiated.
- > Neuroscience Institute established.

1996

- > E. Nigel Harris, M.D., named dean.
- > Clinical Research Center established.
- > The Multidisciplinary Research Center building opens.

1997

- > Obstetrics and Gynecology residency program begun.
- > First M.P.H. degree awarded.
- > MSM assumes full responsibility for third-year clerkship in Pediatrics.

1998

- > MSM re-accredited for a maximum period of seven years by LCME.
- > First Ph.D. degree awarded.
- > Prevention Research Center established.
- > National Center for Primary Care established.

1999

- > Cardiovascular Research Institute established.
- > M.P.H. program accredited by the Council on Education for Public Health (CEPH), making MSM the first historically black university to receive CEPH accreditation.



Multidisciplinary
Research Center



Louis W. Sullivan National Center for Primary Care



Research Wing

2001

- > Pediatrics residency program initiated.
- > MSM secures independent affiliation agreement with Grady Memorial Hospital for the training of medical students and residents.
- > SACS extends accreditation for a maximum period of 10 years.

2002

- > Louis W. Sullivan, M.D., retires; named president emeritus.
- > James R. Gavin III, M.D., Ph.D., named president.
- > Center of Excellence on Health Disparities established.
- > The Louis W. Sullivan National Center for Primary Care building opens to house a conference center with a 570-seat auditorium, clinical skills lab, classrooms, conference rooms, faculty and executive offices, and a cafeteria.
- > David Satcher, M.D., Ph.D., appointed to direct the National Center for Primary Care of Morehouse School of Medicine.

2003

- > Master of Science in Clinical Research (M.S.C.R.) program initiated.

2004

- > James R. Gavin, III, M.D., Ph.D., resigns as president.
- > Research wing of the Medical Education building opens to house major research centers, labs, and faculty and administrative offices.
- > Marjorie Smith, M.D., named dean and first female in this position.

2005

- > David Satcher, M.D., Ph.D., named interim president.
- > MSM celebrates 30th anniversary.

2006

- > Eve J. Higginbotham, M.D., named dean.
- > John E. Maupin, Jr., D.D.S., M.B.A., named president.
- > Drs. Bill and Camille Cosby commit \$3 million to endow the Poussaint-Satcher-Cosby Chair in Mental Health, the largest endowment to MSM to date.

2007

- > The Atlanta Clinical & Translational Science Institute (ACTSI) is established as a partnership between MSM, Emory University, and Georgia Institute of Technology to accelerate the translation of laboratory discoveries into health-care innovations for improved patient care and community solutions. The institute is one of 46 such entities throughout the nation funded by the NIH.
- > Satcher Health Leadership Institute established.

2008

- > Master of Science in Biomedical Research and Biomedical Technology programs initiated.

2009

- > CEPH reaccredits Master of Public Health Program for a maximum of seven years.

2010

- > First Master of Science in Biomedical Research student graduates.

EDUCATION & TRAINING

Morehouse School of Medicine awards the Doctor of Medicine (M.D.), Doctor of Philosophy in Biomedical Sciences (Ph.D.), Master of Public Health (M.P.H.), Master of Science in Clinical Research (M.S.C.R.), Master of Science in Biomedical Research (M.S.B.R.), and Master of Science in Biomedical Technology (M.S.B.T.) degrees.

Undergraduate Medical Education

The educational program leading to the Doctor of Medicine (M.D.) degree focuses on scientific medicine and meeting the primary health care needs of patients who are underserved. Most of the first- and second-year classes are offered on the Westview campus and clinical instruction is provided in Atlanta area hospitals and clinics affiliated with MSM. Clinical preceptorships in health clinics and physicians' offices are also part of the educational program.

Ph.D. in Biomedical Sciences

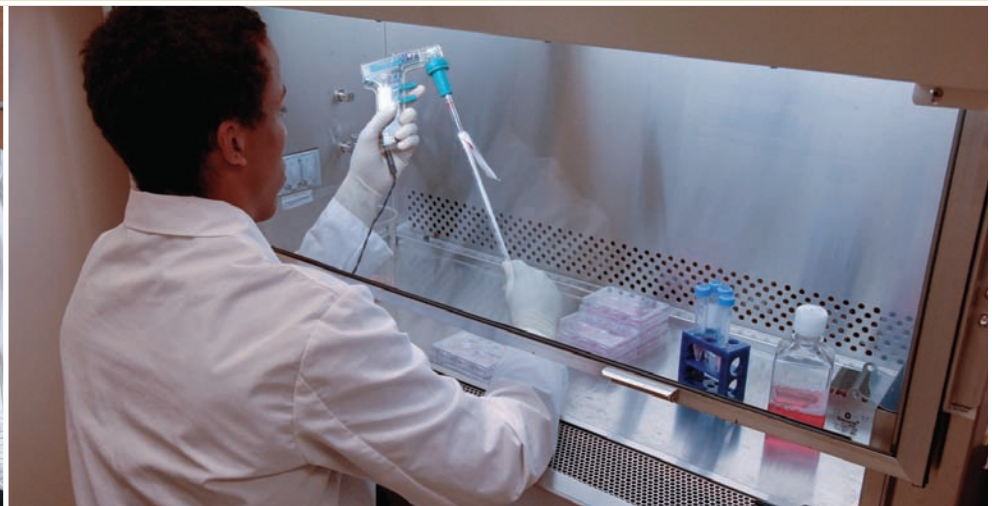
The Ph.D. in Biomedical Sciences Program is designed to develop independent investigators for leadership in academic, government, and corporate biomedical research. MSM-trained biomedical scientists are encouraged to develop a commitment to educating underrepresented minority students and/or to performing research on diseases and health conditions that disproportionately affect minority populations.

Master of Public Health

The Master of Public Health Program is committed to addressing the public health needs of underserved and minority communities in the areas of teaching, research, and service. Our program prepares students to take on these public health challenges with a comprehensive curriculum; and an intensive practicum of field experience, public health leadership seminars, and volunteer and community service. In 2007, the program earned a maximum seven-year term reaccreditation period. In fall 2009, a Certificate in Public Health was introduced as an 18-credit hour, workforce development program designed for persons working in public health that have not yet received formal training, and, health professionals who want to increase their knowledge of basic public health sciences.

Master of Science in Biomedical Research

The M.S. in Biomedical Research program provides a core-didactic and thesis-based curriculum for college graduates seeking a terminal, thesis-based master's degree or considering the pursuit of doctoral degrees in research or health sciences. The program will allow students to obtain a graduate degree; further explore career options in the biomedical sciences; document their ability to handle graduate-level coursework; and conduct a mentored research project in their area of interest.



Master of Science in Biomedical Technology

The M.S. in Biomedical Technology program is a non-thesis program for college graduates preparing for, or already engaged in, biomedical technology careers. The classroom curriculum is similar to that of the thesis-based program. Beyond the classroom, students in this program will focus on gaining experience in developing and applying experimental design and a variety of state-of-the-art methods and instrumentation.

Master of Science in Clinical Research

The Master of Science in Clinical Research (M.S.C.R.) degree program is a broad-based multi-disciplinary graduate level program in clinical research designed to prepare clinical and translational research faculty, residents and others for a career in clinical research. The program provides training in the principles and methods of biostatistics; epidemiology, including genetics and clinical trials; and outcomes research, including health services research and health economics; and application of these principles/methods to clinical research. The program is physically located at the Clinical Research Center on the Westview campus of Morehouse School of Medicine.

Graduate Medical Education

MSM offers residency programs in Family Medicine, Internal Medicine, Obstetrics and Gynecology, Pediatrics, Psychiatry, Public Health and Preventive Medicine and General Surgery. Grady Health System is our primary training hospital; however, we also collaborate with several affiliates in and around the Atlanta metropolitan area. These programs provide ample 'hands-on' experiences and the teaching support of an award-winning faculty. All residency programs are accredited by the Accreditation Council for Graduate Medical Education (ACGME) and participate in the National Resident Matching Program.

Continuing Medical Education

MSM is accredited by the Accreditation Council for Continuing Medical Education to sponsor continuing medical education for physicians. The school's mission provides the basis for development of a CME program for a target audience that includes MSM clinical faculty, community and other physicians, residents, nurses, allied health professionals and medical students. In addition, the CME office collaborates with other agencies to provide joint sponsorship of other quality CME programs.



RESEARCH

Morehouse School of Medicine's research stature and reputation have grown exponentially over the last decade, fueled in large part by significant investments in our research infrastructure with funding from the National Center for Research Resources and the National Center on Minority Health and Health Disparities of the National Institutes of Health (NIH). In 2009, MSM received more than \$54 million in NIH funding. The outcomes of our research activities have already resulted in the establishment of centers, institutes, and programs with our signature areas of research being cardiometabolic diseases, cancer, HIV/AIDS, reproductive diseases, and neurological disorders — all areas that disproportionately affect minority communities.

Cancer Research Program

The Cancer Research Program includes basic scientists, population scientists, behavioral and social scientists, and clinicians united in conducting research aimed at reducing or eliminating racial and ethnic disparities in cancer incidence, morbidity, and mortality. Currently, seven of our faculty members have received the Distinguished Scholars award from the Georgia Cancer Coalition (GCC). GCC established the “Distinguished Cancer Clinicians and Scientists” to recruit leading and nationally renowned cancer clinicians and scientists who are engaged in the most promising areas of cancer research.

Center of Excellence on Health Disparities

The Center of Excellence in Health Disparities (CEHD) was established in 2002 by a grant from the NIH, National Center on Minority Health and Health Disparities. As one of 88 centers nationwide, CEHD builds research capacity and mobilizes community partners to address, and ultimately eliminate, health disparities through a multidisciplinary, community-based participatory approach.

Clinical Research Center

The Clinical Research Center (CRC) was established in 1996 to facilitate investigator-initiated and multicenter clinical trials in cardiovascular disease, cancer, clinical pharmacology, HIV and AIDS and community-based research. It is the first freestanding outpatient research facility of its kind in the nation to receive accreditation by the Joint Commission on Accreditation of Health Care Organizations. Research studies are conducted in the outpatient facility, consisting of five exam rooms, shared use laboratories, 16-bed study participant observation unit, emergency alert system, cardiovascular lab, negative pressure isolation exam room, and metabolic kitchen.

HIV–AIDS Research

HIV and AIDS research initially began in the late 1980s and has evolved into an interdisciplinary collaborative group among the departments of Community Health and Preventive Medicine; Medicine; Microbiology, Biochemistry and Immunology; and Pediatrics. Research encompasses basic, clinical, and behavioral studies focused on the following topics: Nef Pathogenesis leading to AIDS, complementary and alternative approaches to prevention and treatment, characterization of antiviral properties of African herbal treatments, surveillance/transmission, HIV/AIDS prevention in correctional and African-American populations, toxicity of HIV antiretrovirals, and health disparities related to HIV infection/transmission.

Morehouse School of Medicine Prevention Research Center

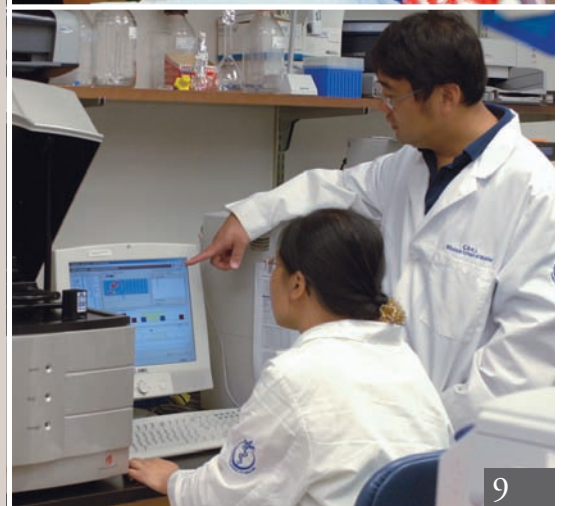
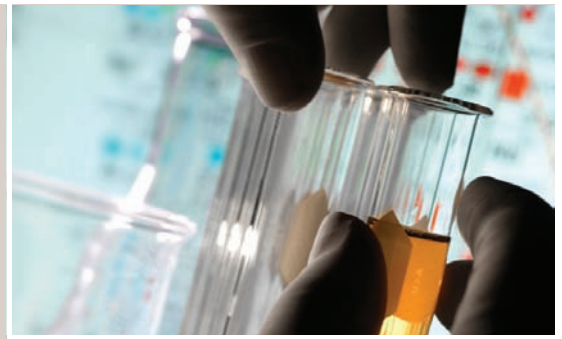
The Morehouse School of Medicine Prevention Research Center (PRC) was established in 1998 as one of a network of 33 academic research centers funded by the Centers of Disease Control and Prevention (CDC). Its goal is to achieve local and national health objectives focused on gaining knowledge about the best methodologies for solving the nation's obstinate health problems, such as HIV/AIDS, cancer, youth violence, adolescent health, men's health, environmental health, and cardiovascular disease.

Research Centers in Minority Institutions

Established in 1986 as the institution's biomedical research infrastructure, the Research Center in Minority Institutions (RCMI) is sponsored by the National Centers for Research Resources of the NIH. Its mission is to provide the infrastructure, expertise, and atmosphere to enhance the process of biomedical research, and, to develop expertise in molecular, cellular, systems, organismal, and population approaches. This provides a foundation for understanding the healthy state in humans and allows investigation into the cause and treatment of important health problems, focusing on those that impact underserved populations.

Reproductive Health Program

The Reproductive Health Program's mission is to develop a rich intellectual environment that promotes and strengthens the research capabilities of our investigators in the reproductive sciences and to serve as a research and training center for minority investigators. Its focus is on research that will lead to a better understanding of the causes of disorders of human reproduction and may ultimately result in improved therapeutic approaches for cancers of the reproductive organs, infertility, and ultimately, to the development of novel strategies for contraception.



Morehouse School of Medicine Cardiovascular Research Institute

The Morehouse School of Medicine Cardiovascular Research Institute (CVRI) was established in July 1999 as a Center of Research Excellence under the direction of Gary H. Gibbons, M.D. The Institute is a multi-investigator, multi-disciplinary organization that transcends traditional academic departmental structures to focus on advancing cardiovascular research and education.

CLINICAL TRIALS & INVESTIGATIONS

I. META-Health Program – A program designed to address ethnic disparities in obesity-related cardiovascular disease and cardio-metabolic syndromes through a 50:50 partnership between MSM CVRI and Emory, funded by the NIH.

II. Center of Clinical Research Excellence Program – A faculty development program redesigned in 2005 to grow the number of nationally competitive MSM-based clinical investigators. Funded by the NIH, program investigators have researched obesity, cardiovascular disease, hypertension, sickle cell anemia and metabolic syndrome with a particular focus on the impacts on minority communities.

III. RCMI Translational Research Network – MSM and Charles Drew University of Medicine and Science are lead collaborators on a multi-site clinical research project that is the first to use an NIH-funded research network composed of minority institutions. The first RTRN project is titled *The Effect of Vitamin D Supplementation on Biomarkers and Vascular Function in African-American Hypertensives with Vitamin D Deficiency*.



CVRI

Cardiovascular Research Institute of
Morehouse School of Medicine

QUICK FACTS

- > 11 full-time faculty
- > 35 staff
- > 5,500 sq ft. facility
- > 36 Peer-reviewed Publications
- > 3.1 publications/faculty member
- > 21 grants
- > \$22,464,516 grant funding
- > Average Annual Revenue Generated per faculty: \$542,865.
- > 5.40 CVRI Return-on-Investment Ratio

MISSION

- To develop an internationally recognized center of research excellence in cardiovascular science.
- To create a cutting-edge research environment that fosters innovation and multi-disciplinary synergy and exchange.
- To improve the health outcomes of individuals with cardiovascular disease by establishing links from molecule-to-man-to-community. The Institute strives to bridge the basic science disciplines of molecular biology, genetics and physiology with the disciplines of clinical investigation, epidemiology and community-based interventions.
- To play a leadership role in solving the problem of ethnic disparities in the burden of cardiovascular disease.
- To develop the next generation of leaders in biomedical research with a particular focus on enhancing the ethnic and gender diversity of the community of research scientists.

MSM ATTRACTS LEADERS OF NATIONAL STATURE

Mukaila A. Akinbami, Ph.D., is a Research Instructor of Medicine at CVRI.

Leonard M. Anderson Ph.D., is an Assistant Professor of Medicine at CVRI and a co-director of the Functional Genomics Core Facility, a core facility of the Research Center for Minority Institutions (RCMI) network.

Methode Bacanamwo, Ph.D., is a Research Instructor at CVRI.

Minerva Garcia-Barrio, Ph.D., is a Research Instructor at CVRI.

Aurelian Bidulescu M.D., M.P.H., Ph.D., is an Assistant Professor in CVRI and the Department of Community Health and Preventive Medicine (CHPM.)

Sharon Francis-David Ph.D., is an Assistant Professor at CVRI.

Qing Song, M.D., Ph.D., is an Assistant Professor of Medicine at CVRI.

Verna Lamar Welch Ph.D., M.P.H., is an Associate Professor at CVRI and the CHPM.

LEADERSHIP

Gary H. Gibbons, M.D., brings his success as a leading clinician-scientist while on the faculties of Stanford University and the Harvard Medical School to CVRI at MSM. In a brief period of time, Dr. Gibbons' leadership is attracting national recognition to the institute and its work.

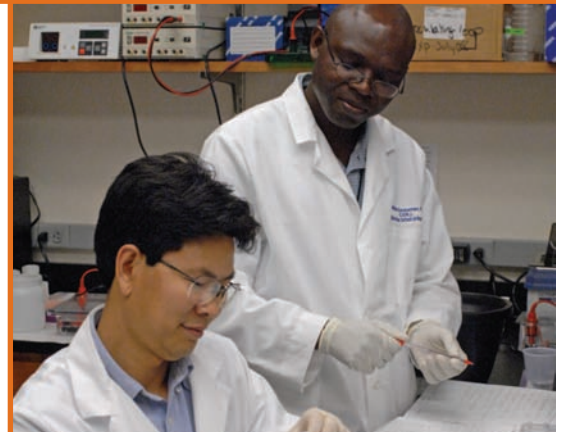
Dr. Gibbons' research has led to important advances in the areas of hypertension, vascular biology, gene therapy and functional genomics in the field of cardiovascular science.

He is internationally recognized as a clinician-scientist who effectively integrates basic science and translational research with clinical medicine and public health. In recognition of his long history of leading research, he has been elected by his peers to membership in the prestigious Institute of Medicine of the National Academies.

CAREER HIGHLIGHTS

- Robert Wood Johnson Foundation Minority Faculty Development Award
- Pew Foundation Biomedical Scholar Award
- Established Investigator Award of the American Heart Association
- 95th percentile in funding among all NIH awardees
- 4 U.S. patents
- Serves on grant review committees for the NIH, the Howard Hughes Medical Institute and the American Heart Association.
- Selected to participate in NIH "Roadmap for Medical Research's Epigenomics Program"

The CVRI is funded in part by a grant from the NIH National Center for Minority Health and Health Disparities and the NIH National Heart, Lung and Blood Institute to develop cardiovascular research centers at Historically Black Colleges and Universities.



Dr. Qing Song and Dr. Methode Bacanamwo



Dr. Gary Gibbons



Dr. Minerva Garcia-Barrio (right) and Makesi Sutton

Morehouse School of Medicine Neuroscience Institute



The Neuroscience Institute of Morehouse School of Medicine was founded in 1995 to address the scarcity of biomedical scientists from under-represented

population groups locally and nationwide.

The Institute supports meritorious research in a supportive and challenging environment to:

- Investigate and teach the functional organization of the nervous system.
- Seek ways to reduce the burden of nervous system disorders through biomedical research.
- Add to our critical mass of nationally competitive investigators and independently funded research.
- Help young scientists achieve independence.
- Prepare future generations of students to engage in fundamental discovery and in clinical studies of diseases that disproportionately affect the communities served by the Institution.

KEY RESEARCH PROGRAMS

- **The Circadian Rhythms Sleep Disorders Program (CRSD)** – focuses on the study of circadian rhythms and sleep in health and disease while devising effective pharmacological and behavioral treatments to prevent or alleviate the pathologies caused by malfunctioning or misalignment of the circadian and/or sleep system.
- **The Neuroprotection, Neurorepair and Stroke Program (NNSP)** – investigates the efficacy of a novel neuro-protective compound, neuregulin-1 (NRG-1) using a non-human primate stroke model.
- **Stroke Prevention/Intervention Research Program** – developing multi-disciplinary partnerships with regional, private, and governmental institutions in the areas of stroke research, minority stroke research training and career development, and effective stroke prevention/intervention outreach to urban and rural African-American communities.

“An estimated 70 million people in the United States suffer from sleep problems, and more than 50 percent of them have a chronic sleep disorder. Despite substantial scientific progress in both clinical and basic science related to sleep and its disorders, there remains the challenge and the need to better understand the functions and disorders of sleep, treat sleep disorders, and explain the nature of human physiology during wakefulness and the individual stages of sleep.”

National Institute of Neurological Disorders and Stroke

“The economic burden of stroke in African Americans and Hispanics will be enormous over the next several decades...up to a staggering \$2.2 trillion. Further efforts to improve stroke prevention and treatment in these high stroke risk groups are necessary. ...We have a long way to go before all Americans receive adequate stroke prevention and emergency care.”

Neurology, August 16, 2006

“The Neuroscience Institute of Morehouse School of Medicine has emerged as the clear leader in brain research and in training of students within the minority academic community.”

~ **Dr. Torsten Wiesel**
Nobel Laureate, President Emeritus
of Rockefeller University
Chair of the Neuroscience Institute
Program Advisory Committee

LEADERSHIP

The Institute is led by **Peter R. MacLeish, Ph.D.**, the George H.W. and Barbara P. Bush Chair in Neuroscience, along with a team of world-renowned researchers and a Program Advisory Committee comprised of prominent neuroscience scholars.

ACCOMPLISHMENTS

- Earned NIH and other competitive grants, including six Research Project Grants (R01) out of nine opportunities.
- NIH funding through 2012 by the National Institute of Neurological Disorders and Stroke (NINDS.)
- Institute investigators serve on NIH study sections.
- A Specialized Neuroscience Research Program initiated in 1999 has bolstered the founding of 11 other NIH-funded programs at other institutions with similar missions.
- \$1.6 million to fund the George H. W. and Barbara P. Bush Endowed Chair in Neuroscience.
- \$1 million from the William Stamps Farish fund to develop programs of circadian rhythm and sleep disorders and neurorepair, and stroke.
- \$500,000 award from The W.M. Keck Foundation to strengthen the Institute's Genomics Core facility.
- Founding member of the Atlanta-wide Center for Behavioral Neuroscience, funded by the National Science Foundation.
- Dr. Byron Ford received a Research Project Cooperative Agreement (U01) in 2006, and Dr. Alec Davidson received an NIH Exploratory/ Developmental Research Grant Award (R21) the same year.

The Neuroscience Institute of Morehouse School of Medicine is funded in part by grants from NIH, National Institute of Neurological Disorders and Stroke (NINDS), W.M. Keck Foundation and the William Stamps Farish Fund.

FACULTY

- **Gianluca Tosini, Ph.D.**, Chairman, Pharmacology & Toxicology and Director, Circadian Rhythms & Sleep disorder Program
- **Byron Ford, Ph.D.**, Professor
- **Shobu Namura, M.D., Ph.D.**, Associate Professor
- **Morris Benveniste, Ph.D.**, Associate Professor
- **Alec Davidson, Ph.D.**, Associate Professor
- **Chiaki Fukuhara, Ph.D.**, Associate Professor
- **Ketema Paul, Ph.D.**, Associate Professor



Roger P. Simon, M.D.

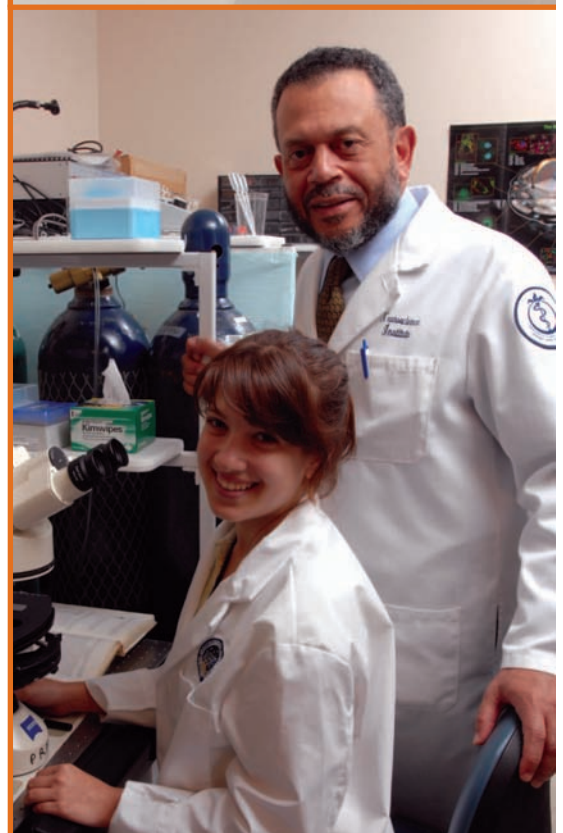
"We welcome to our faculty renowned stroke researcher Roger P. Simon, Ph.D. as the new director of Translational Programs in Stroke."

~ **Zach W. Hall, Ph.D.**

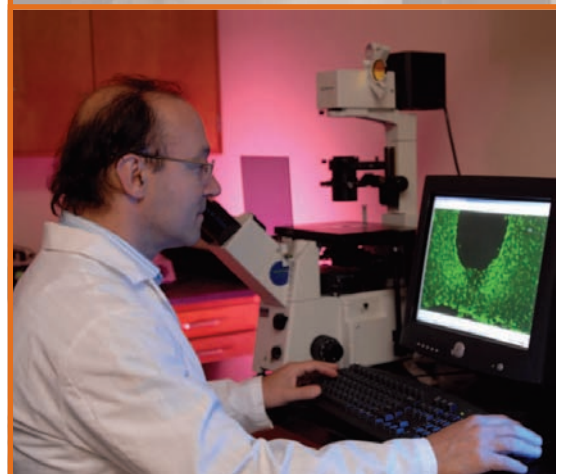
**Neuroscience Institute Program Advisory Committee
Former Director, NINDS; Member, Institute of Medicine
Executive Vice Chancellor Emeritus,
University of California at San Francisco**



Dr. Byron Ford



Dr. Peter MacLeish (right) and Naomi Benveniste



Dr. Gianluca Tosini

COMMUNITY HEALTH

Area Health Education Centers Program

Founded in 1984, the Morehouse School of Medicine's Model Area Health Education Centers (AHEC), is one of more than 50 AHEC programs nationwide and includes two centers: Southeastern Primary Care Consortium (SPCC)/Atlanta AHEC serving metropolitan Atlanta and the Magnolia Coastlands AHEC serving 39 counties in rural southeast Georgia. The AHEC Program provides essential support for the institution's Rural Primary Care Clerkship, Community Health Course, and Clinical Preceptorship, as well as the Pediatric Residency Program and other community-based educational and health promotion initiatives.

Center for Community Health and Service-Learning

The Center for Community Health and Service-Learning engages health professional students, faculty, community-based organizations and academic affiliates in service-learning, community service and civic engagement activities. Since 2000, the Corporation for National and Community Service, Learn and Serve Higher Education program has funded the Center to mobilize more than 600 health professional students to address the health disparities of underserved communities through health promotion projects in metropolitan Atlanta and the nation.

Cork Institute

The Cork Institute on Alcohol and Other Addictive Disorders was established in 1985 within the Department of Psychiatry and Behavioral Sciences to serve as a leader in substance abuse and addiction education targeting African-Americans and underserved populations. The Institute seeks to address mental health disparities and promote the prevention and treatment of substance abuse and co-occurring disorders.

Health Promotion Resource Center

The Health Promotion Resource Center (HPRC) was established in 1988 under the Department of Community Health and Preventive Medicine. Initially funded by the Kaiser Family Foundation in Menlo Park, California, the HPRC has developed a health promotion and disease prevention model for underserved populations and has provided multiple programs and services in over 90 of Georgia's 159 counties. The primary focus of the diverse projects administered by the HPRC is health promotion, prevention, education, and youth development in African American populations through community-based organizations in both urban and rural communities.

National Center for Primary Care

The National Center for Primary Care (NCPC) was established in 1998 by a grant from the Office of Minority Affairs to be a national resource for encouraging doctors to pursue primary care careers, making primary care more effective, and supporting primary care professionals serving underserved areas. NCPC has the unique distinction of being the only congressionally sanctioned center in the country dedicated to promoting optimal health care for all, with a special focus on serving underserved communities.



Pipeline and Health Promotion Programs

MSM has long been committed to improving the health well-being of communities through comprehensive community service programs. The following is a list of our K-12 programs:

- **Benjamin Carson Science Academy** – preparatory enrichment program designed to stimulate the interest of minority elementary and middle school students.
- **Vivien Thomas Summer Research Program** – mentoring program designed to increase the number of minority students interested in pursuing a career in the biomedical sciences.

- **SAT Preparatory** – in partnership with Kaplan, Inc., provides test prep to rising high school juniors and seniors to enhance their test-taking skills.
- **MSM Medical Post Explorers Program** – encourages local high school students to pursue careers in the fields of medicine, allied health, and biomedical research.

MSM faculty collaborate with community organizations throughout the year to host health fairs and facilitate violence prevention programs (Metro Atlanta Violence Prevention Program) and an HIV/AIDS risk reduction program (HIV-RAPP). In addition, our faculty are featured guests on a local community health radio show and help sponsor the Atlanta Cancer Awareness Partnership.

The Satcher Health Leadership Institute



Satcher Health Leadership Institute

The Satcher Health Leadership Institute (SHLI) was established in 2006 by David Satcher, M.D., Ph.D., to develop the next generation of diverse, public health leaders, foster and support leadership strategies, and influence policies and practices toward the reduction and ultimate elimination of disparities in health. The vision of SHLI is to become an internationally renowned institute for leadership development of individuals committed to the reduction of health disparities.

Center of Excellence for Sexual Health

Funded primarily by the Ford Foundation, this program's mission is to raise the level of national dialogue on human sexuality, sexual health and well-being. There are four program arms: Bridge-Building Dialogues Program, Community Leadership in Sexual Health Program, Disabilities, Chronic Conditions and Sexual health Program, and Religious Leaders' Program.

Community Voices: Health Care for the Underserved

Community Voices works to identify and combat the unique obstacles to healthy lifestyles faced by individuals involved in the criminal justice system. Consisting disproportionately of poor men of color, these individuals often enter the criminal justice system with myriad undiagnosed or untreated health concerns, which are frequently exacerbated during incarceration. Upon release, they face significant challenges to successful re-entry and reintegration, often made particularly difficult due to health problems. As more than 700,000 people are released nationwide annually – and more than 90 percent of prisoners are ultimately released to the community – this is a significant issue for the country.



Dr. David Satcher

Director, The Satcher Health Leadership Institute and Center of Excellence on Health Disparities
Poussaint-Satcher-Cosby Chair in Mental Health
16th Surgeon General of the United States



PATIENT CARE

Grady Health System

The majority of MSM clinical services are provided at Grady Memorial Hospital, in partnership with Emory University School of Medicine. Together, faculty and residents are responsible for more than three million patient visits a year.

An internationally recognized teaching hospital, Grady Health System is one of the largest public health systems in the United States. Its infrastructure consists of the 953-bed Grady Memorial Hospital, nine neighborhood health centers, Crestview Health and Rehabilitation, and Children's Healthcare of Atlanta at Hughes Spalding. With its nationally acclaimed Emergency Care Center and Burn Unit, Grady Health System has the only level I trauma center in the region and serves as the ambulance provider for the city of Atlanta —the state's only Poison Center is also housed at Grady.

Morehouse Medical Associates

Established in 1985, Morehouse Medical Associates, Inc. (MMA), the school's faculty practice plan, is one of the largest multispecialty physician groups in Georgia. MMA's focus continues to be on providing culturally sensitive, evidence-based, high-quality health services to Atlanta's multicultural community.

MMA offers a unique and comprehensive line of health services for routine health care by primary care physicians in four different areas: Family Medicine, Obstetrics and Gynecology, Pediatrics and Internal Medicine. In addition, MMA has physician specialists in more than 20 fields affiliated with some of Atlanta's best-known hospitals, including: *Atlanta Medical Center, Atlanta Veterans Administration Medical Center, Children's Healthcare of Atlanta at Hughes Spalding, DeKalb Medical Center, Emory University Hospital Midtown, Georgia Division of Public Health, Georgia Regional Hospital at Atlanta, and South Fulton Medical Center.*

Dr. Truddie Darden



Dr. Armel Simo and Dr. Charles Sow



Dr. Beatrice Gee



FACULTY & ALUMNI

Faculty

MSM employs more than 200 full- and part-time faculty members, many of whom are internationally recognized in their fields.

Institute of Medicine

A nonprofit organization chartered in 1970 as a component of the National Academy of Sciences, the Institute of Medicine (IOM) serves as adviser to the nation to improve health. The Institute provides independent, objective, evidence-based advice to policymakers, health professionals, the private sector, and the public. MSM has five IOM members among its faculty, leadership and alumni:

- Louis W. Sullivan, M.D. ~ President Emeritus
- David Satcher, M.D., Ph.D.
- Regina Benjamin, M.D., '82, M.B.A.
- Peter R. MacLeish, Ph.D.
- Gary Gibbons, M.D.

Election to the prestigious membership of the Institute is a revered accomplishment among distinguished professionals and leaders who have achieved excellence in a field relevant to the Institute's mission — namely medicine and health — and have a willingness to participate actively in its work.

MSM Ranks Number One in Social Mission

Morehouse School of Medicine ranks number one in the country in the first-ever study of all U.S. Medical Schools in the area of social mission.* The ranking comes as a result of the emphasis MSM places on primary care and serving underserved communities – a role the study emphasizes as critical to improving overall health care in the U.S.

* The study appears in the June 15 *Annals of Internal Medicine*.

Alumni

The majority of MSM's more than 1,000 alumni choose to honor the MSM mission by serving communities located in rural areas and inner cities. Our alumni have distinguished themselves in leadership roles locally, nationally and internationally. Examples include:



- **Regina Benjamin, M.D., '82, MBA**
18th U.S. Surgeon General,
U.S. Department of Health and Human Services



- **Robert S. Kaufmann, M.D., '86**
Private Practice Physician,
The Kaufmann Clinic, Inc.



- **Roger L. Morales, M.D., '96**
Private Practice Physician, Excellent Pediatrics
President, National Alumni Association
(2010-2012)



- **Wayne Riley, M.D., '93**
President, Meharry Medical College,
Nashville, TN



- **David C. Rutstein, M.D., '83, M.P.H.**
Acting Deputy U.S. Surgeon General,
U.S. Department of Health and Human Services



- **Michelle Staples-Horne, M.D., '90, M.P.H.**
Medical Director,
GA Department of Juvenile Justice
President, National Alumni Association
(2008-2010)

ACCREDITATION

ACCREDITING ORGANIZATIONS	FIRST ACCREDITED	LAST ACCREDITED	NEXT REVIEW
*Southern Association of Colleges and Schools (SACS)			
Medical Education (M.D.)	1986	2001	2011
Ph.D. in Biomedical Sciences (Ph.D.)			
Master of Public Health (M.P.H.)			
Master of Science in Clinical Research (M.S.C.R.)			
Master of Science in Biomedical Research (M.S.B.R.)			
Master of Science in Biomedical Technology (M.S.B.T.)			
Liaison Committee on Medical Education (LCME)			
Medical Education Program	1985	2005	2013
Council on Education for Public Health (CEPH)			
Master of Public Health Program	1999	2007	2014
Joint Commission on Accreditation of Healthcare Organizations (JCAHO)			
Clinical Research Center	1997	2007	2011
Accreditation Council for Graduate Medical Education (ACGME)			
Residency Programs			
Graduate Medical Education Institutional Review (GME/IR)	Pending (2010)	N/A	Pending (2010)
Family Medicine	1981	2007	**
Internal Medicine	1991	2006	2010
Obstetrics and Gynecology	1996	2008	2010
Pediatrics	2000	2004	2010
Public Health and Preventive Medicine	1986	2007	2010
Psychiatry	1990	2006	2010
Surgery	1993	2007	2010
Accreditation of the Association for Assessment and Accreditation of Laboratory Animal Care (AAALAC International)			
Center for Laboratory Animal Resources	2005	2005	2011
Accreditation Council for Continuing Medical Education (ACCME)			
Continuing Medical Education	1986	2004	2010

* Morehouse School of Medicine is accredited by the Commission on Colleges of the Southern Association of Colleges and Schools (1866 Southern Lane, Decatur, Georgia 30033-4097; Telephone number 404.679.4501) to award the degrees Doctor of Medicine (M.D.), Doctor of Philosophy (Ph.D.) in Biomedical Sciences, the Master of Public Health (M.P.H.) and the Master of Science in Clinical Research (M.S.C.R.).

** Currently on probationary status.

STUDENT HIGHLIGHTS 2009-2010

STUDENTS BY PROGRAM AND GENDER

Program	Male	Female	Totals
C.P.H.	-	3	3
M.D.	80	133	213
M.P.H.	11	50	61
M.S.B.S.	2	9	11
M.S.C.R.	1	8	9
Ph.D.	7	18	25
Ph.D./M.P.H.	1	-	1
Ph.D./M.S.C.R.	-	2	2
Graduate Certificate	1	3	4
Total	103	226	329

STUDENTS BY PROGRAM AND YEAR

Program	First	Second	Third	Fourth	Fifth+	Totals
C.P.H.	3	-	-	-	-	3
M.D.	59	59	51	44	-	213
M.P.H.	28	27	4	-	2	61
M.S.B.S.	8	3	-	-	-	11
M.S.C.R.	8	1	-	-	-	9
Ph.D.	6	3	-	4	12	25
Ph.D./M.P.H.	-	1	-	-	-	1
Ph.D./M.S.C.R.	-	1	-	1	-	2
Graduate Certificate	4	-	-	-	-	4
Total	116	100	50	49	14	329

RESIDENCY POSITIONS BY SPECIALTY AND YEAR

Specialty	First Year	Second Year	Third Year	Fourth Year	Fifth+ Years	Totals
Family Practice	5	5	5	-	-	15
Internal Medicine (C)*	15	15	15	-	-	45
Internal Medicine (P)*	4	-	-	-	-	4
OB/GYN	3	3	3	3	-	12
Pediatrics	6	6	6	-	-	18
Psychiatry	4	4	4	4	-	16
Public Health	-	4	4	-	-	8
Surgery (C)*	2	2	2	2	2	10
Surgery (P)*	6	6	-	-	-	12
Total	45	45	39	9	2	140

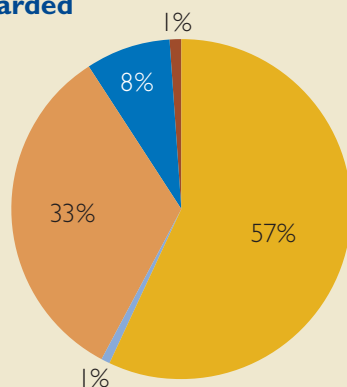
* (C) Categorical and (P) Preliminary

2009 Residents Matched by MSM Students

Anesthesiology	1
Child Neurology	1
Emergency Medicine	6
Family Medicine	4
General Surgery	3
Internal Medicine	7
Medicine/Preliminary	3
Obstetrics/Gynecology	5
Orthopaedic Surgery	2
Pediatrics	9
Psychiatry	1
Radiology Diagnostic	1
Surgery Preliminary	1
Total	44

2010 Degrees Awarded

- M.D.
- Ph.D.
- M.P.H.
- M.S.C.R.
- M.S.B.R.



In 2010, 57% of our M.D. graduates matched in primary care specialties (i.e., Family Medicine, Internal Medicine, and Pediatrics). The national average was 44%.

Degrees Awarded by Program (YTD)

M.D.	826
M.P.H.	180
M.S.B.R.	1
M.S.C.R.	18
Ph.D.	34
Total	1,059

EXTRAORDINARY PHILANTHROPY

As a private, historically black, relatively young institution with a distinctive and largely public mission, Morehouse School of Medicine is highly dependent upon extraordinary philanthropy. Given today's complex and changing health professions' educational environment, it is vitally important that we continue to expand the number of donors and increase the level of contributions in support of our unique purpose.

ANNUAL FUND

Founder's Society

The Founder's Society provides critical support for the fundamental academic and administrative operations of the school and helps to bridge the gap between tuition and the true costs of health professions education. Annual donations to the Founder's Fund support need-based scholarships, the library, and classroom and technology enhancements.

Hugh M. Gloster Society

The Hugh M. Gloster Society, named in honor of one of MSM's esteemed founder and the late president emeritus of Morehouse College, was established in 2007 to help grow philanthropy and to enhance our acknowledgment of exceptional generosity to the fund. As a special giving society of the school's *Annual Fund*, benefits of membership in the Gloster Society include: attendance at an annual donor appreciation dinner hosted by the MSM president; listing in the membership book; preferred seating and parking at all events held at the Louis W. Sullivan National Center for Primary Care; participation in the MSM Health and Wellness program; and access to services of the MSM Library.

Louis C. Brown Vanguard Award

The Louis C. Brown Vanguard Award is presented annually at the Gloster Society annual dinner to individual(s) whose pioneering spirit and demonstrated leadership have impacted issues of health disparities in Georgia and the nation.

2009 Recipients- A.D. "Pete" Correll, Michael B. Russell

2010 Recipient- Regina M. Benjamin, M.D., '82, M.B.A.,
18th U.S. Surgeon General

2010 Annual Fund Challenge

MSM launched the Hugh M. Gloster Society Challenge with the goal of increasing members to the society. With every new member, MSM will receive a \$1,000 match, which helps to ensure that MSM continues to train physicians, biomedical scientists, public health practitioners, academicians and leaders of the future to address our national and global health challenges. The challenge runs through December 31, 2010. Online donation is available at: www.msm.edu.

2010 Vanguard Recipient- President John E. Maupin, Jr., Dr. David Rutstein, '83 on behalf of Dr. Regina Benjamin, '82 and Anthony Welters



2009 Vanguard Recipient- President John E. Maupin, Dr. Michelle Staples-Horne, '90, Pete Correll, and Dr. Louis W. Sullivan



2009 Vanguard Recipient- President John E. Maupin, Dr. Michelle Staples-Horne, '90, Michael B. Russell, and Dr. Hugh Gloster, Jr.

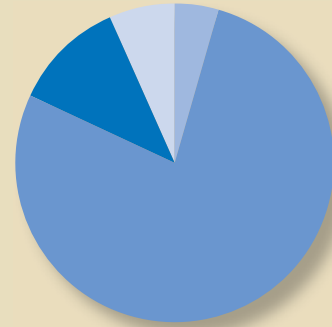


FINANCE

MOREHOUSE SCHOOL OF MEDICINE CONSOLIDATED STATEMENT OF ACTIVITIES *For the Fiscal Year Ended June 30, 2009*

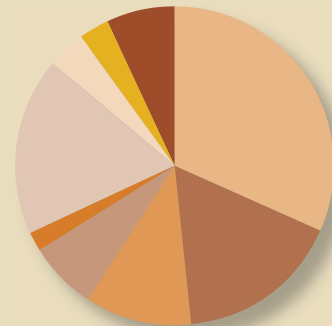
REVENUES AND OTHER ADDITIONS

TUITION AND FEES (NET OF SCHOLARSHIPS)	\$ 5,893,496	5%	●
FEDERAL, STATE AND LOCAL GOVERNMENT GRANTS AND CONTRACTS	102,560,711	83%	●
PRIVATE GIFTS, GRANTS AND CONTRACTS	13,744,808	11%	●
FACULTY PRACTICE PLAN	9,271,629	7%	●
INVESTMENT EARNINGS (LOSSES)	(7,974,700)	-6%	
OTHER SOURCES	357,902	0%	
	<u>\$ 123,853,846</u>	<u>100%</u>	



EXPENDITURES

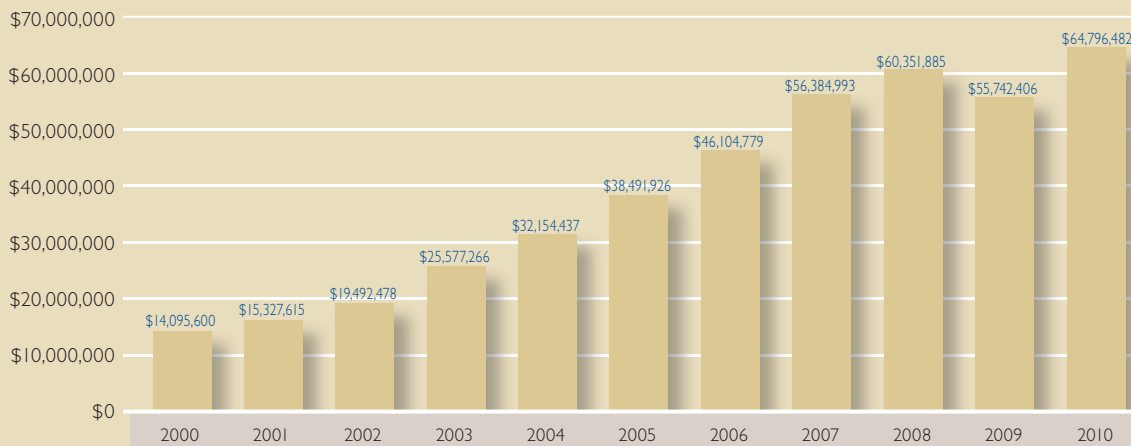
INSTRUCTION	\$ 37,368,304	32%	●
RESEARCH	20,305,617	17%	●
PUBLIC SERVICE	13,043,587	11%	●
ACADEMIC SUPPORT	8,543,750	7%	●
STUDENT SERVICES	1,909,925	2%	●
INSTITUTIONAL SUPPORT	21,901,399	18%	●
FACILITIES OPERATIONS AND MAINTENANCE	4,240,746	4%	●
DEPRECIATION	3,706,968	3%	●
FACULTY PRACTICE PLAN	8,747,019	7%	●
	<u>\$ 119,767,315</u>	<u>100%</u>	



INCREASE IN NET ASSETS

\$ 4,086,531

10-Year History of Endowment Market Values



Morehouse School of Medicine has made every effort to provide accurate information in this publication. If you have corrections, please contact the Office of Marketing and Communications at 404-752-1730 so that we may update the information.



Office of Institutional Advancement and Marketing & Communications

720 Westview Drive SW
Atlanta, Georgia 30310-1495

Phone: 404-752-1730
Fax: 404-752-1162
www.msm.edu